



Your contact details:

Title:

Name:

Company:

Customer no.

Street:

ZIP/postal code, city:

Country:

E-mail:

Phone:

Ordering spare parts

The spare parts for Type 3251/3251-AM are listed on the next pages. This document can also be used for ordering:

1. Fill in your contact data and information on the product.
2. Enter the quantity of spare parts needed.
3. Click [Send form] button to attach the PDF form to an e-mail.
4. Attach additional information (e.g. invoice, photos) to the e-mail, if necessary.
5. Send e-mail to spareparts-de@samsongroup.com.

Either

Configuration ID (Var-ID):

or

SAMSON order no.:

Position in order:

or specifications on the nameplate

(description of the currently valid nameplate ► EB 8051)

Type designation:

Material:

Nominal size:

Pressure rating:

Flow coefficient:

Characteristic:

Seat-plug seal:

Seat code:

Pressure balancing:

Flow divider/AC trim:

Version

Standard bonnet

With insulating section

With bellows seal

Application

NACE

Oxygen

Industrial gases

Chlorine

Send form

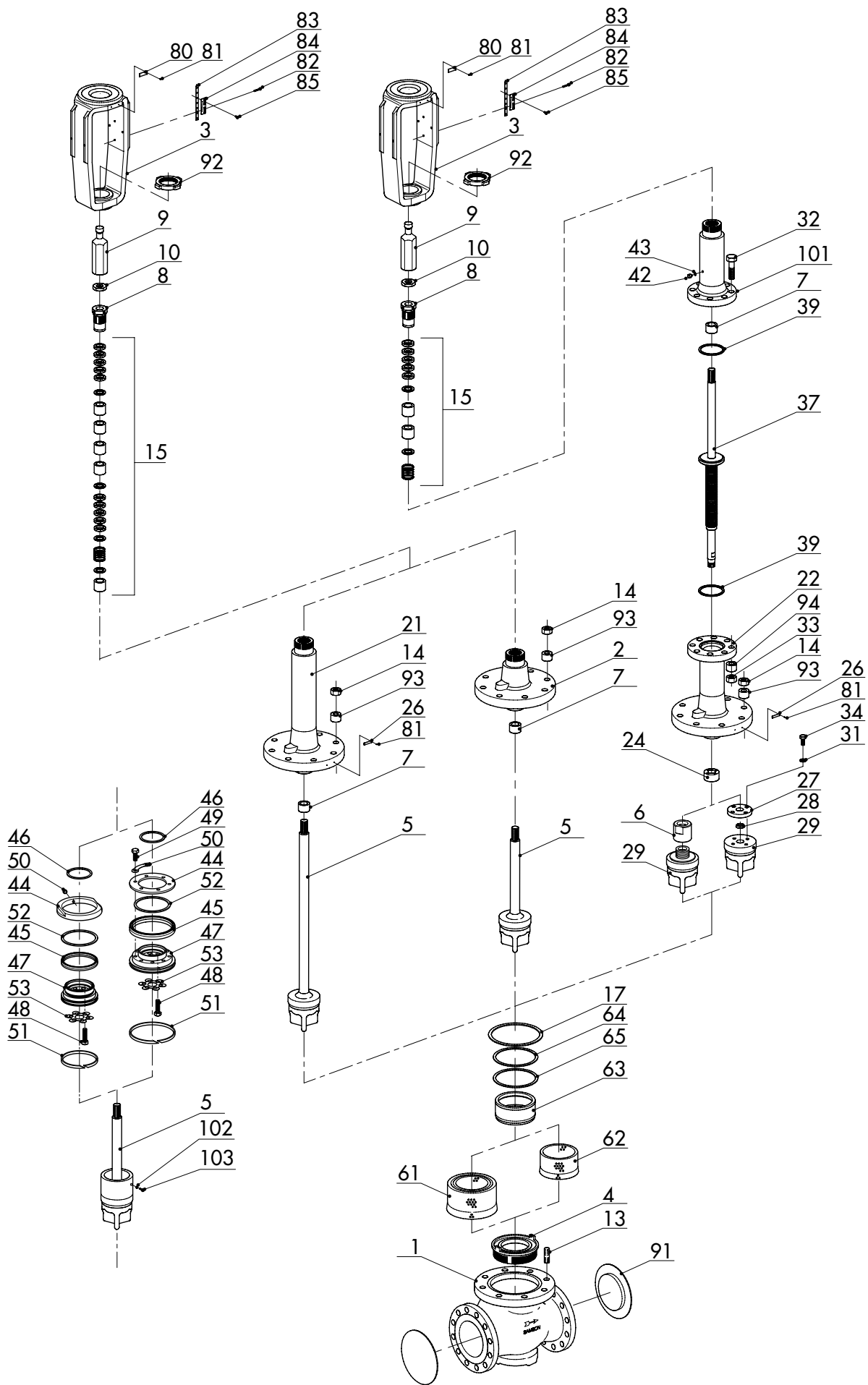
Print form

Clear form

Edition November 2024

Spare Parts List

EL 8051 EN



Spare part no.	Qty.	Part subject to wear ¹⁾	Purity requirements ²⁾
1			•
2			•
3			
4		•	•
5		•	•
6		•	•
7			•
8		•	•
9			
10			
13		•	
14		•	
15		•	•
17		•	•
21			•
22			•
24			•
26			
27			•
28		•	•
29		•	•
31		•	•
32		•	
33		•	
34		•	•
37		•	•
39		•	•
42			•
43		•	•
44			•
45		•	•
46		•	•
47			•
48		•	•

Spare part no.	Qty.	Part subject to wear ¹⁾	Purity requirements ²⁾
49		•	•
50		•	•
51		•	•
52			•
53		•	•
61		•	•
62		•	•
63			•
64		•	•
65		•	•
80			•
81			
82			
83			
84			
85			
91			•
92			
93		•	
94		•	
101			•
102		•	•
103		•	•

- ¹⁾ Parts subject to wear are a subset of the spare parts, which are subjected to normal operational wear or fatigue.
- ²⁾ For certain applications (e.g. for oxygen service), this material is specified as "cleaned".
- ³⁾ Version with balanced valve plug
- ⁴⁾ Version with flow divider
- ⁵⁾ For DN 15 to 150 only

Specifications subject to change without notice
